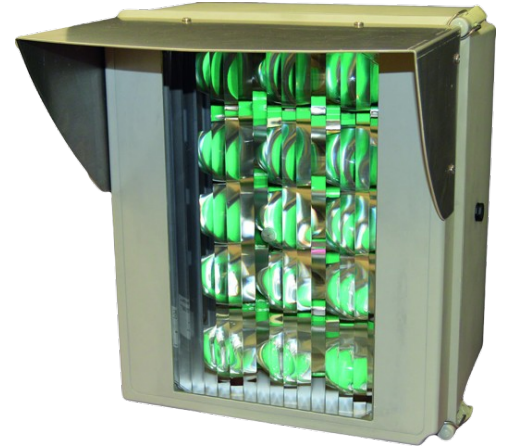


RLED-MasterRange

LED Range Lantern

Tideland's original RLED-MasterRange is a high intensity range light based on the leading RLED-355 range lantern. Our new development, RLED-MasterRange, provides exceptional performance in a panel mounting configuration. MasterRange is a versatile LED light panel that is available with up to 15 LED's. Additional panels can be mounted adjacent to each other to provide extended ranges. Three panels, for example, will provide in excess of 27NM. The housing is manufactured from marine resistant material and is rated at NEMA 4X. Mounting can be direct to a support structure or to an optional base plate. This new assembly not only eliminates traditional lampchangers, it also eliminates costly mirrors and does not require focusing. MasterRange is available with multiple numbers of LEDs, from 2 to 15, allowing for a wide range of effective intensities, with ranges up to 26NM nighttime and over 6NM during daylight.



CHARACTERISTICS

- Supports all marine signaling industry standards
- Utilises 1/4 inch thick transparent acrylic lens
- Spreader lenses are available for varied horizontal divergences
- Constructed of corrosion resistant, marine grade materials
- Reliable in the severest of environments
- All IALA approved colours are available
- External sunswitch
- Full monitor and control access

OPTIONAL EQUIPMENT

- Optional hood assembly helps keep lens clear of dirt and bird droppings.
- Optional Tideland GPS based system, to maintain flash synchronisation of two or more range lanterns.

RLED-MasterRange

LED Range Lantern

Technical Details	
Applications	Leading light, short or long range; port traffic signal, night or day
Input Voltage	9 to 36VDC (optional mains power)
Input Power	Up to 45W for each panel
Vertical Divergence	2° to 3.1° (depending on colour)
Horizontal Beam Spreaders	3°, 8°, 11°, 20° or 28°
Mounting	Frame mounting as standard
1 Panel Fixture	A = 356mm, B = 305mm C203mm (14in x 12in x 8in)
1 Panel Fixture	8.2kg (18lbs)

