

AB-68-Ex

Audiobeam[®] 2 NM Fog Signal



TIDELAND SIGNAL CORPORATION

The AB-68-Ex Audiobeam[®] is a multi-emitter array that automatically broadcasts a 360° beam of sound in the horizontal plane to a preselected code that is audible for 2 NM. It is United States Coast Guard approved. AB-68-Ex is engineered to operate as a 2 NM fog signal with a design safety feature that enables the signal to be heard over 1/2 NM with just two drivers enabled.

FEATURES:

- **ELECTRONIC CONTROL UNIT** – Tideland's ECMU-800-Ex is rated for Zone 1, IIB, T-5 Hazardous Areas. This unit includes fuse-protected outputs to each emitter and duplicate signal coding, frequency selection and power control devices. Any failure of one of these devices initiates an automatic changeover to the second unit. The ECMU also provides monitoring and alarm features, reporting and status of driver and ECMU and allows remote control for on/off switching of fog signal, changing signal code and testing ECMU operation. For platform installations outside of the North Sea, a simplified single control system can be supplied.
- **DRIVER UNITS** – The emitters are heavy-duty electromagnetic types with phenolic-coated linen diaphragms in watertight manganese bronze enclosures. They are highly resistant to corrosion and operate at only 25% of rated capacity to ensure long service life.
- **STRUCTURE** – The AB-68-Ex structure is constructed of three stainless steel legs able to withstand severe storms and harsh marine environments. The fog signal is completely assembled and ready for field connection. Mounting options: base down or suspended from top. Optional accessory: an ML-155 Ex subsidiary light, for use in synchronous systems [light mounting bracket is included].
- **POWER** – The fog signal can operate in a stand-alone mode from a float charged battery supply or solar powered electric generator. Tideland Signal can supply fully Zone 1 certified power supplies.



Shown is AB-68-Ex Audiobeam 2 NM Fog Signal.

**TIDELAND SIGNAL CORPORATION
CORPORATE HEADQUARTERS**

P.O. Box 52430
Houston, Texas 77052-2430, USA
4310 Directors Row
Houston, Texas 77092 USA
PH: + 1 713-681-6101
FAX: + 1 713-681-6233
E-MAIL: hq@tidelandsignal.com

P.O. Box 52370, O.C.S.
Lafayette, Louisiana 70505-2370, USA
PH: + 1 337-269-9113
FAX: + 1 337-269-9052
E-MAIL: lafayettesales@tidelandsignal.com

TIDELAND SIGNAL CANADA LTD.
#2170-21331 Gordon Way
Richmond, B.C., Canada V6W 1J9
PH: + 1 604-247-0988
FAX: + 1 604-247-0987
E-MAIL: sales@tidelandsignalcanada.com

TIDELAND SIGNAL PTE. LTD.
Crystal Time Building
16 Tannery Lane #04-00
Singapore 347778
PH: + 65 6333-0078
FAX: + 65 6333-0079
E-MAIL: sales@tidelandsignal.com.sg

TIDELAND SIGNAL LIMITED
Unit B, Kendal House
Victoria Way
Burgess Hill, Sussex, RH15 9NF, UK
PH: + 44 (0) 1444 872240
FAX: + 44 (0) 1444 872241
E-MAIL: sales@tidelandsignal.ltd.uk

TIDELAND SIGNAL LTD. (UAE)
FZS1 BB03, JAFZA South
Jebel Ali Free Zone, Dubai, U.A.E.
PH: + 971 4-886-0180
FAX: + 971 4-886-0181
E-MAIL: sales@tidelandsignal.ltd.uk

WEB SITE: www.tidelandsignal.com



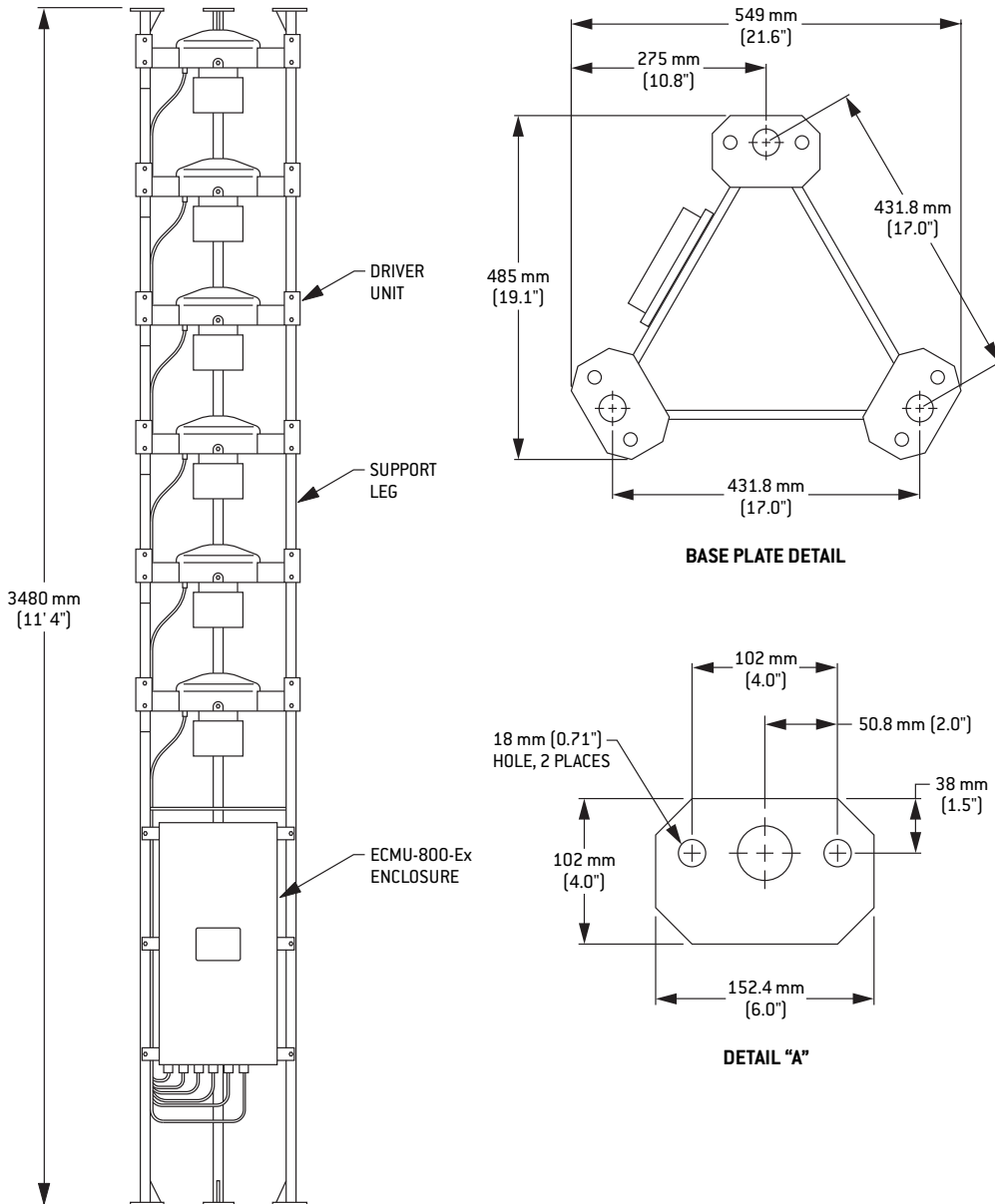
Tideland Signal Corporation maintains ISO 9001:2000 accreditation. It is company policy to provide products and services that meet the highest standards of quality in the industry.

Membership Organisations



PRINTED IN U.S.A.

© Tideland Signal Corporation 2006 – 5MG8R2



SPECIFICATIONS

Range 2 NM in accordance with usual range recommended by IALA;
USCG approved as 2 NM fog signal

Input
Voltage 10 – 16 VDC
Power 240 watts when sounding

Output
Frequency 800 Hz
SPL greater than 133.4 dB @ 1 metre

Coding Morse code letter 'U' every 30 seconds as standard or
any one of eight field-selectable codes available

Environmental Marine Atmosphere; Operating Temperature Range
-40°C to +60°C; 100% Relative Humidity; IP64 Ingress Protection

Weight 220 kg (485 lb)

Hazardous Area Certificates Zone 1, IIB, T-5

Certification Code
ECMU-800-Ex EEx II 2G
TDA-22450-Ex Drivers EEx II 2G

NOTE: Specifications are subject to change.

